

AMMSA JULY 2008

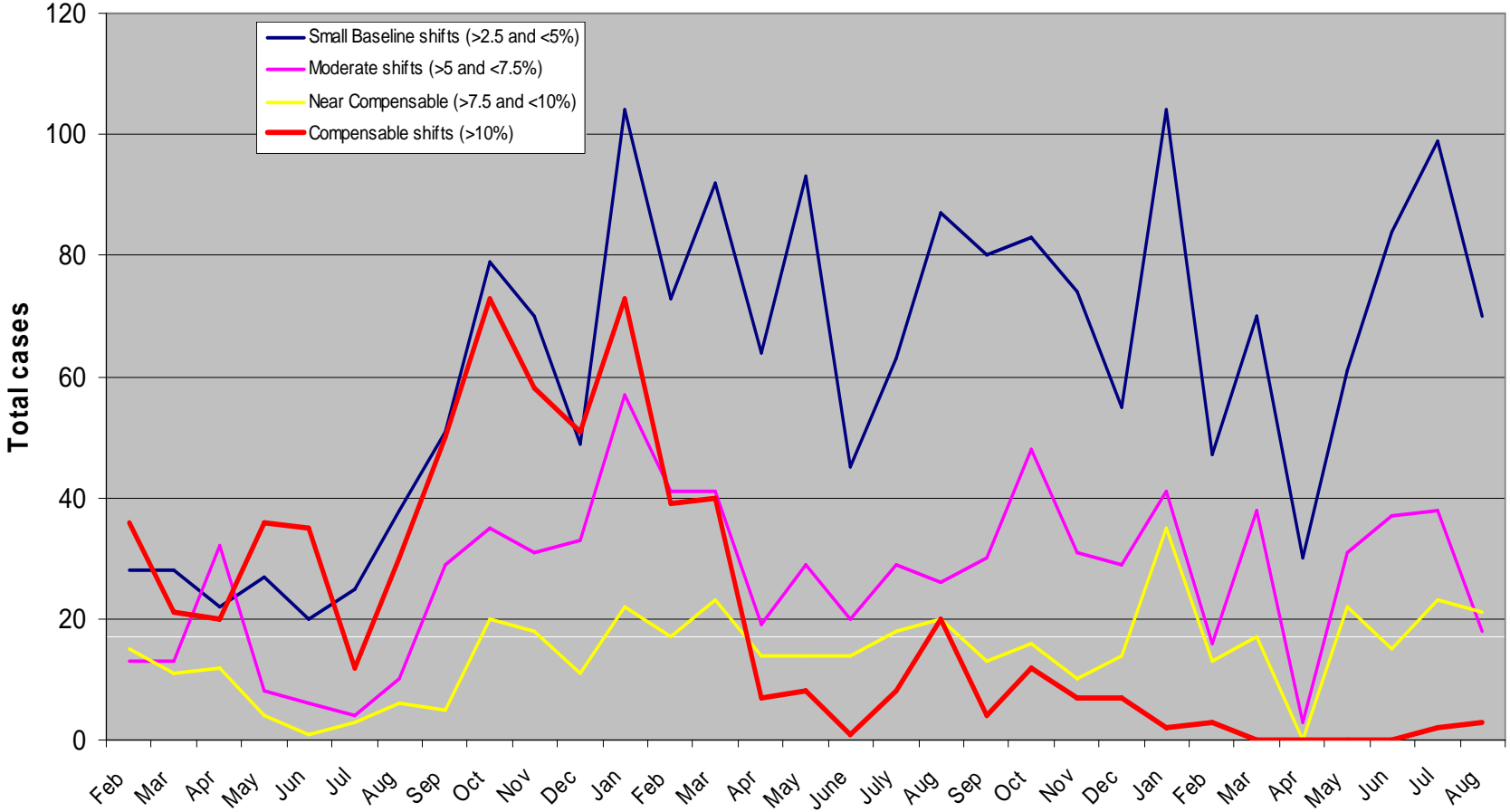
Central District
Hosted by RPM Mine 3
PJB Becker

AMMSA – JULY 2008

- **Anglo Safety Way**
- **Safety & Health Mile Stones**
 - Noise Induced Hearing Loss**
 - Airborne Pollutants - Dust**
- **Safety Statistics**

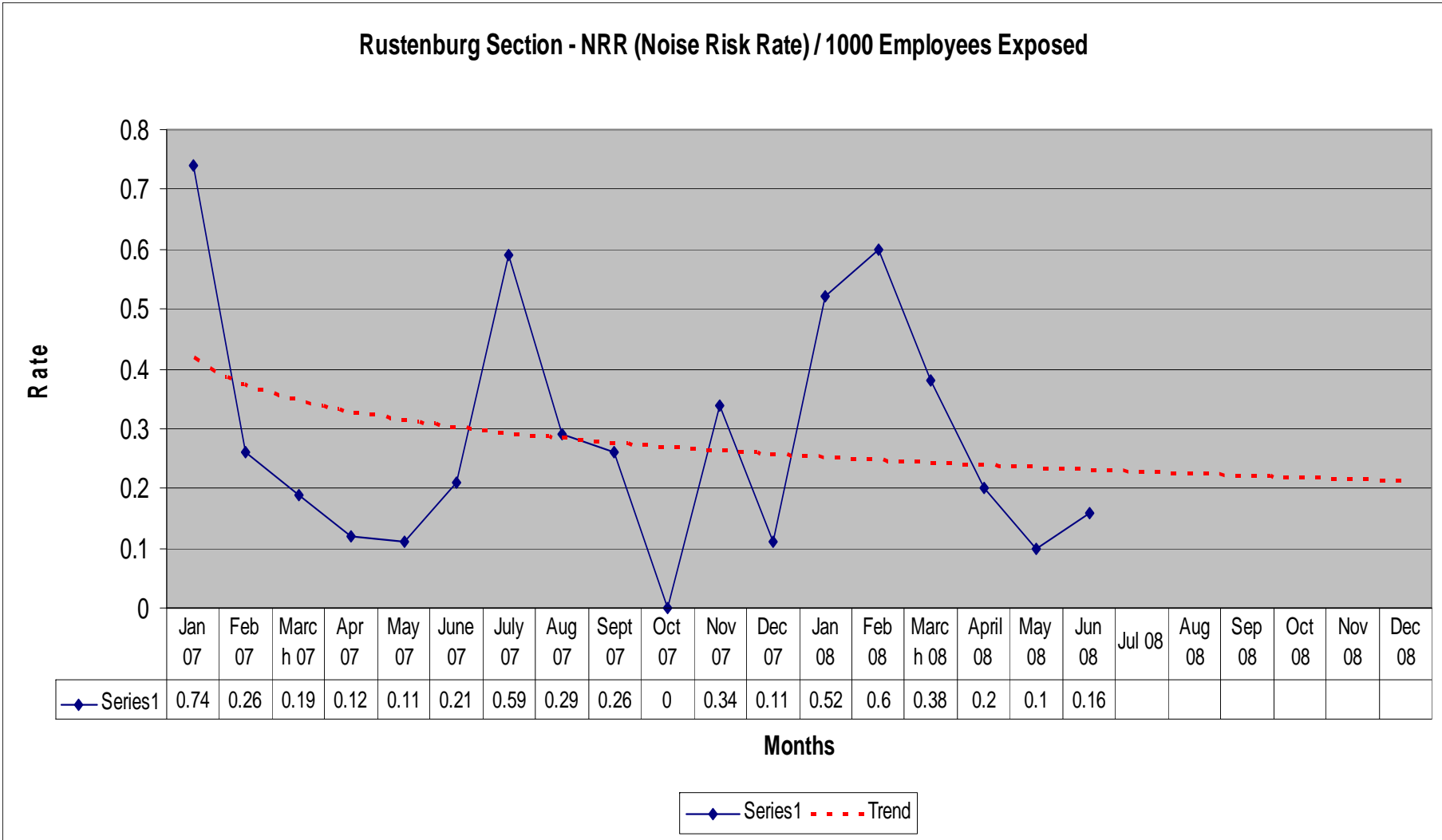
NOISE INDUCED HEARING LOSS

NIHL Shifts last 3 years – RPM Section



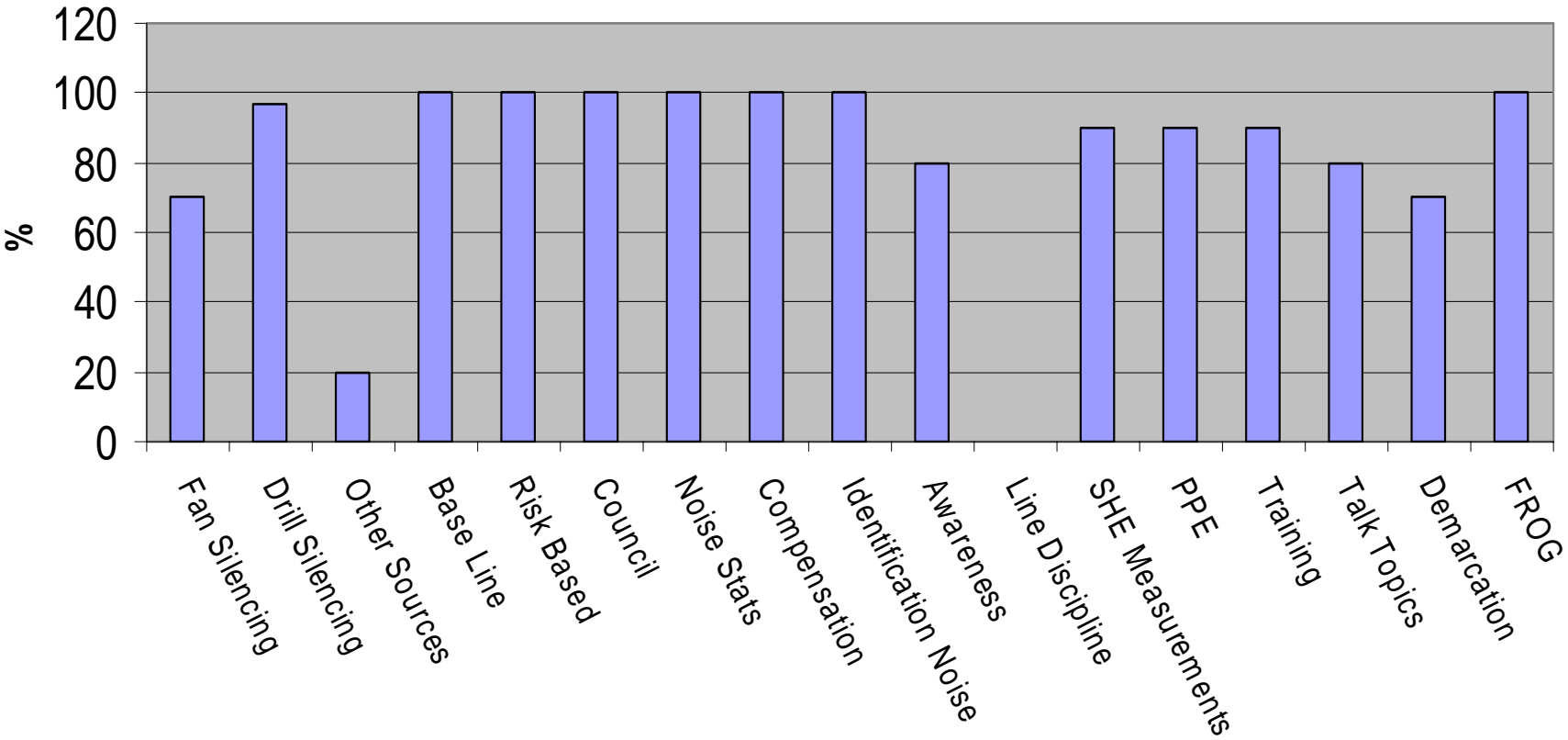
NOISE INDUCED HEARING LOSS

Incidence on Noise cases PLH >10%



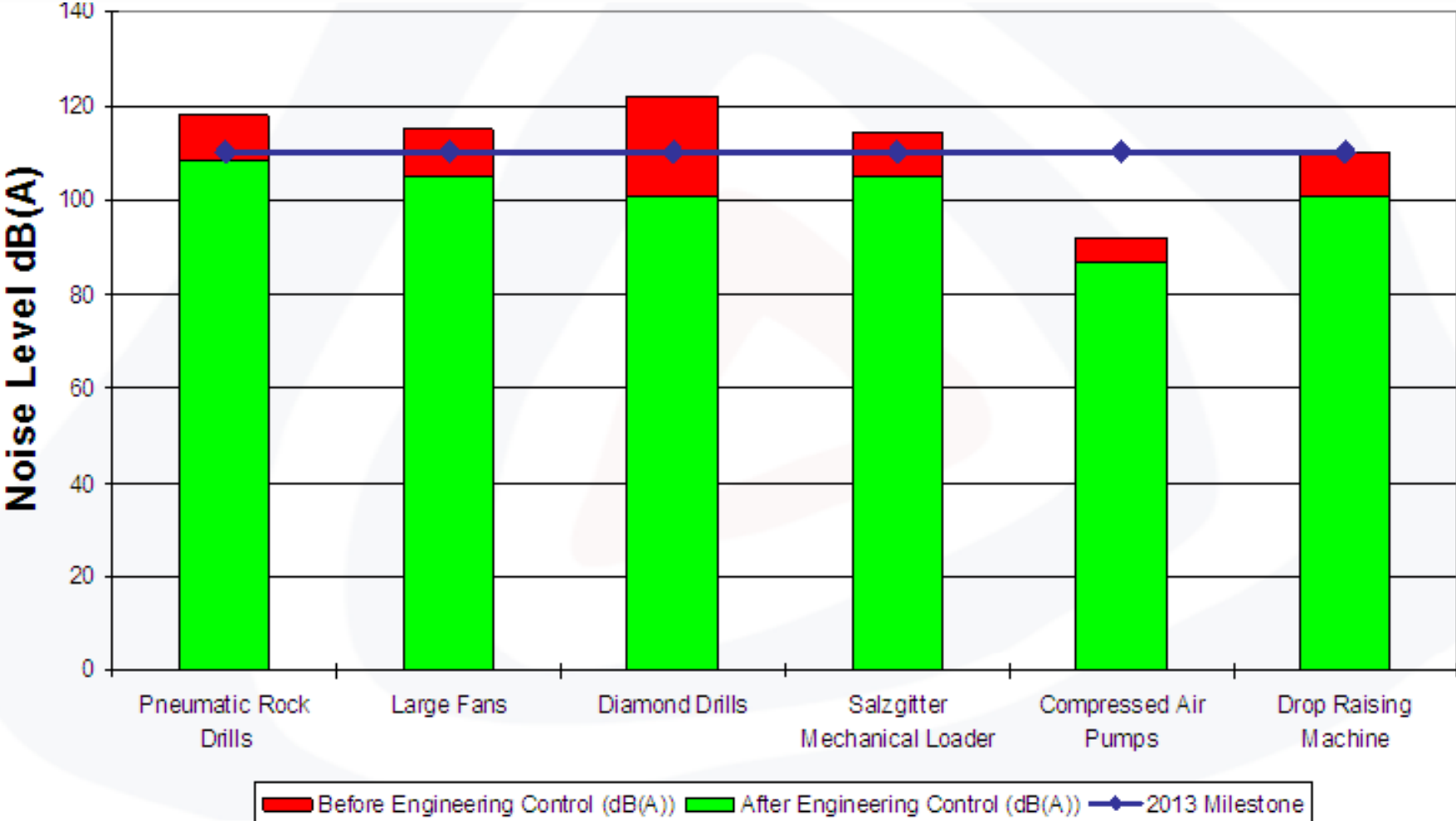
NOISE INDUCED HEARING LOSS

% Completion OH5 NIHL Committee



NOISE INDUCED HEARING LOSS

Addressing the main sources



NOISE INDUCED HEARING LOSS

Diamond drill Silencing

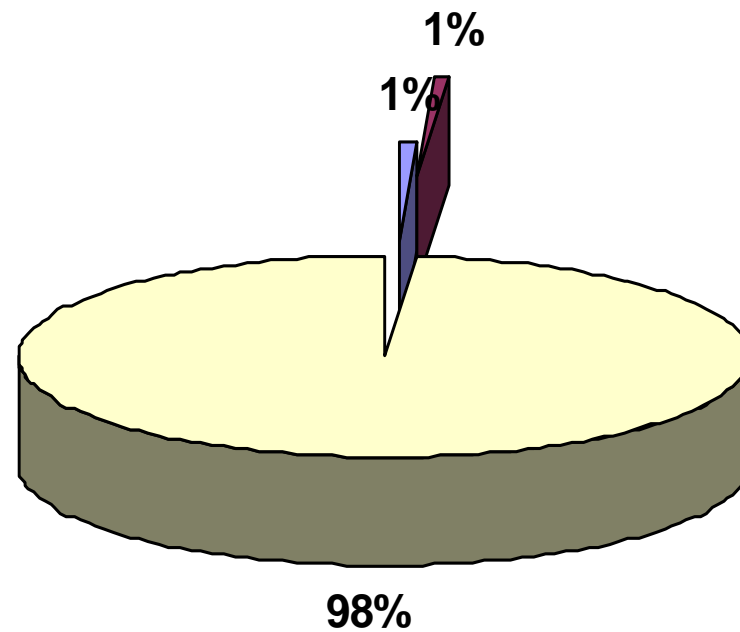


AIRBORNE POLLUTANTS - DUST

Dust Constituents

Metals represent the elements associated with Platinum and platinoids.

Pollutant index in this case = 0.73



■ SiO2

■ Metals

■ PNOC

AIRBORNE POLLUTANTS - DUST



CURRENT RISK PROFILE

HOMOGENEOUS EXPOSURE GROUP:
RPM/Conv/Stope/Dust(C)

HAZARD: Platinum Mine Dust -
Respirable

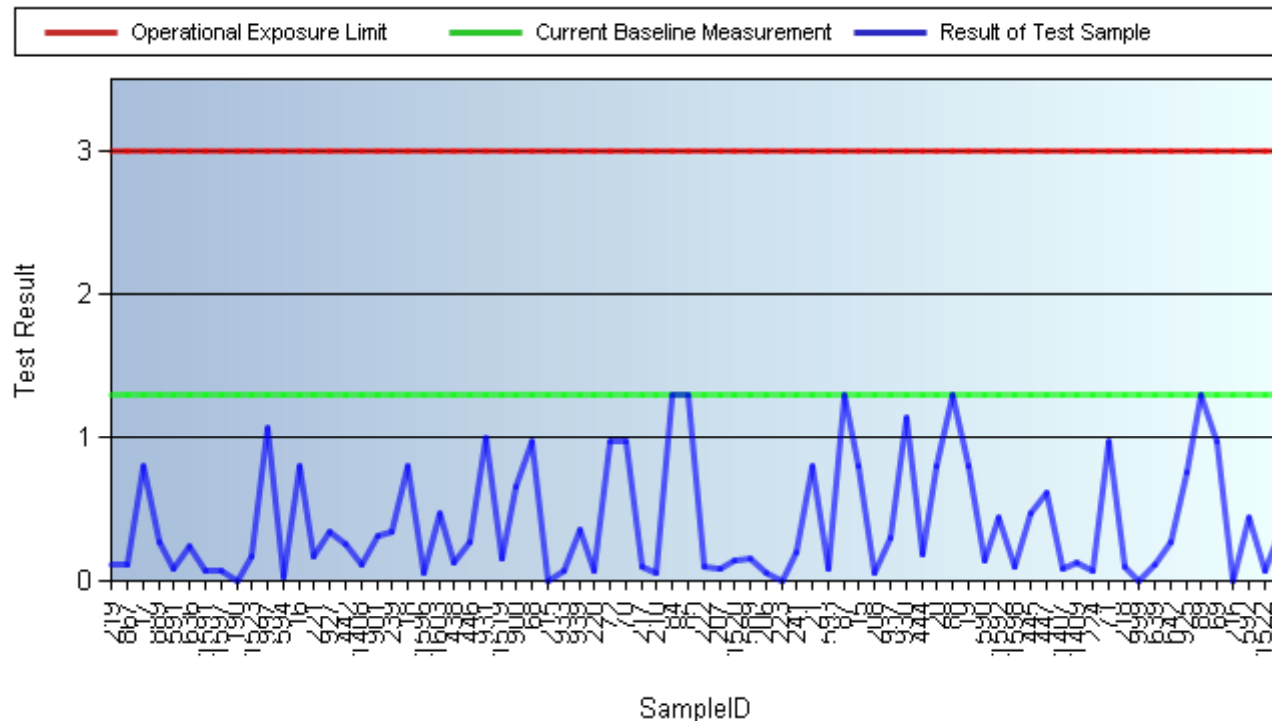
ORGANIZATIONAL UNIT: Rustenburg Platinum Mines R/S (NEW)

SAMPLE ACTIVITY AREA: RPM Mining

SAMPLE AREA: Conventional Mining

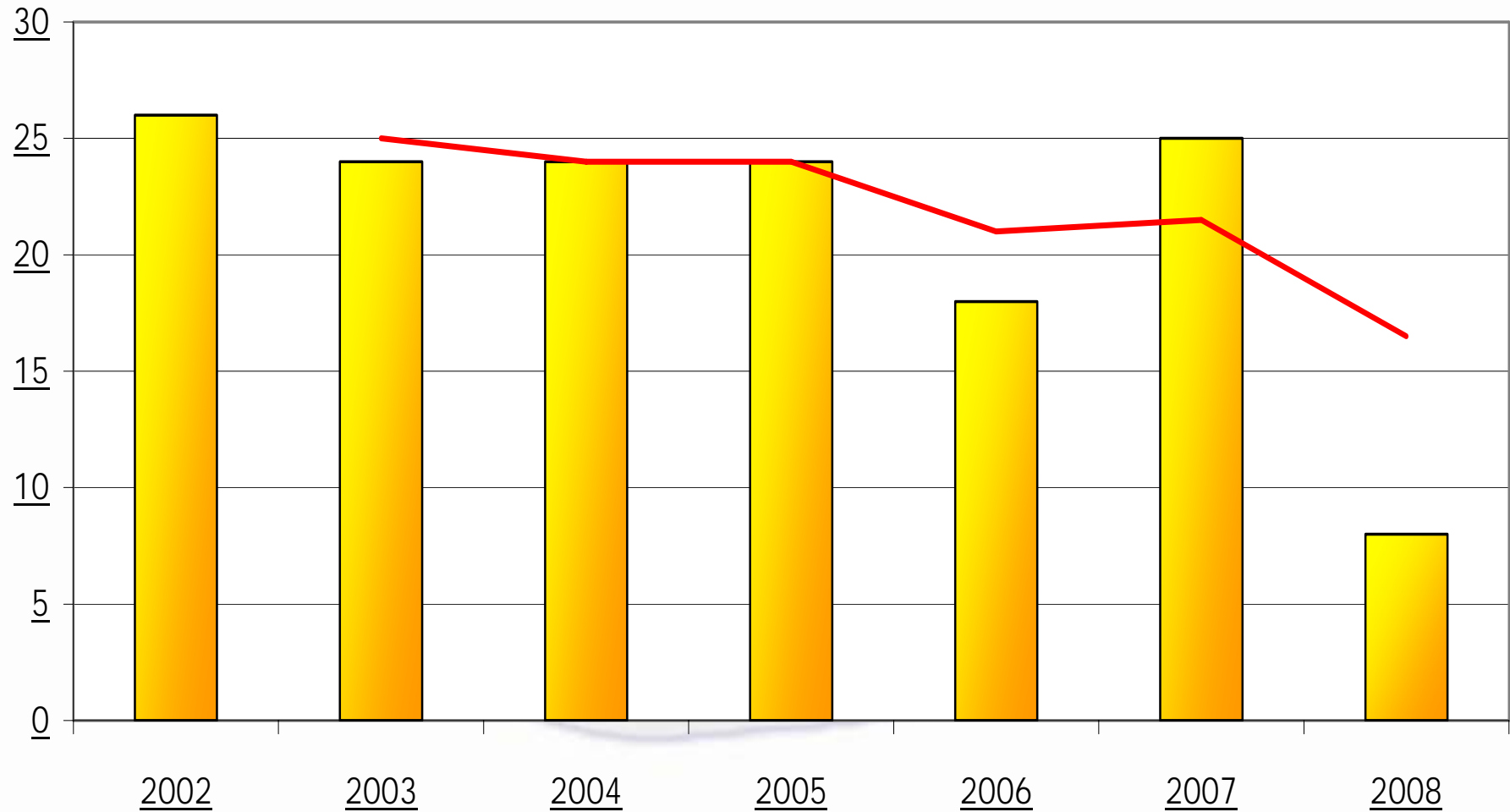
ACTIVITY AREA: Stoping (08)

Graph Showing Risk Analysis per Sample

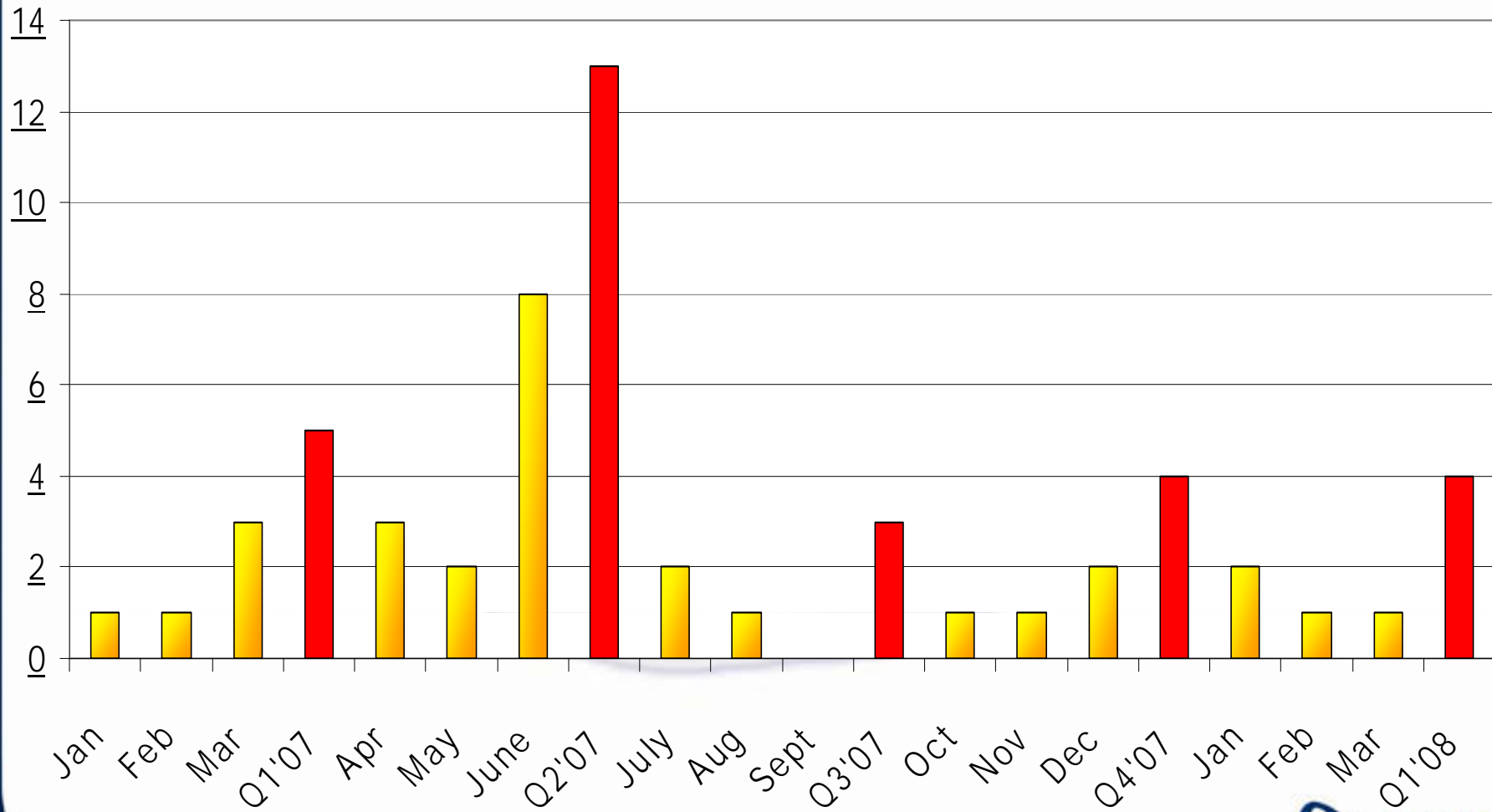


SAFETY STATISTICS

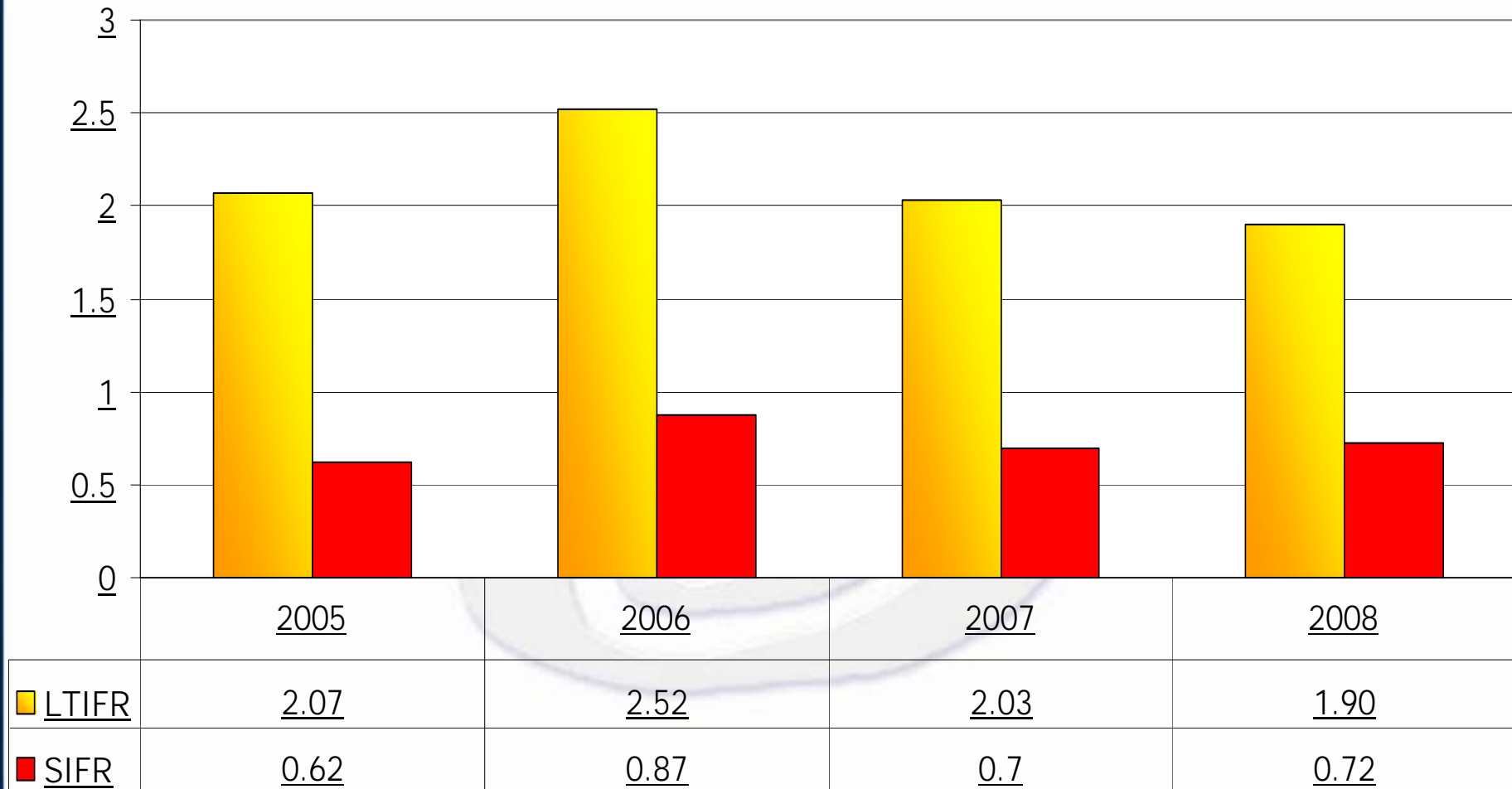
Yearly Number of Fatalities



Monthly Fatalities



Yearly LTIFR & SIFR



QUESTIONS