

NORTHAM

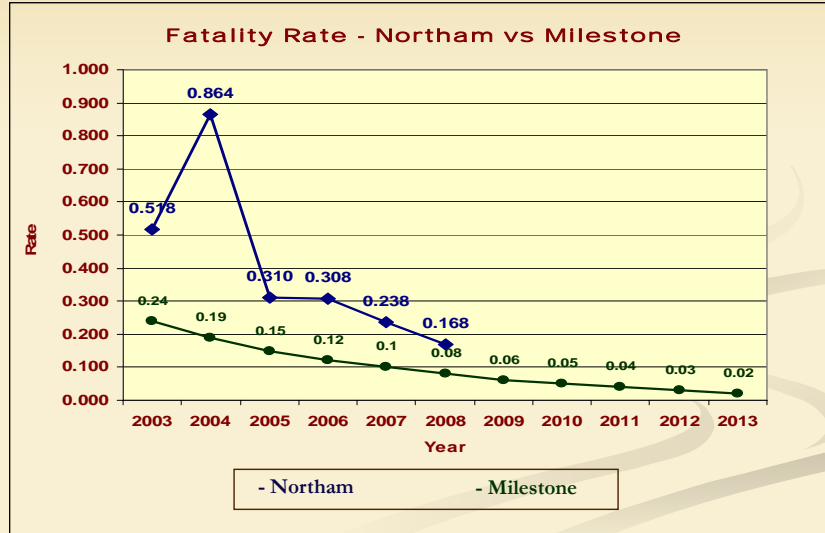
PLATINUM LIMITED

North West (RTB) Health & Safety Tri- Partite Forum

2008 – 06 - 05

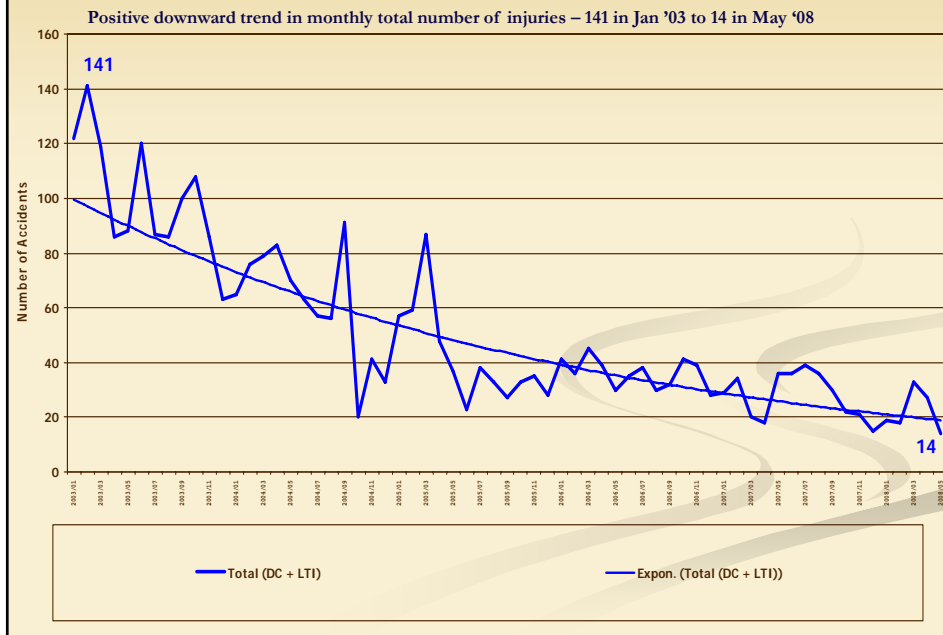


Milestone 2013

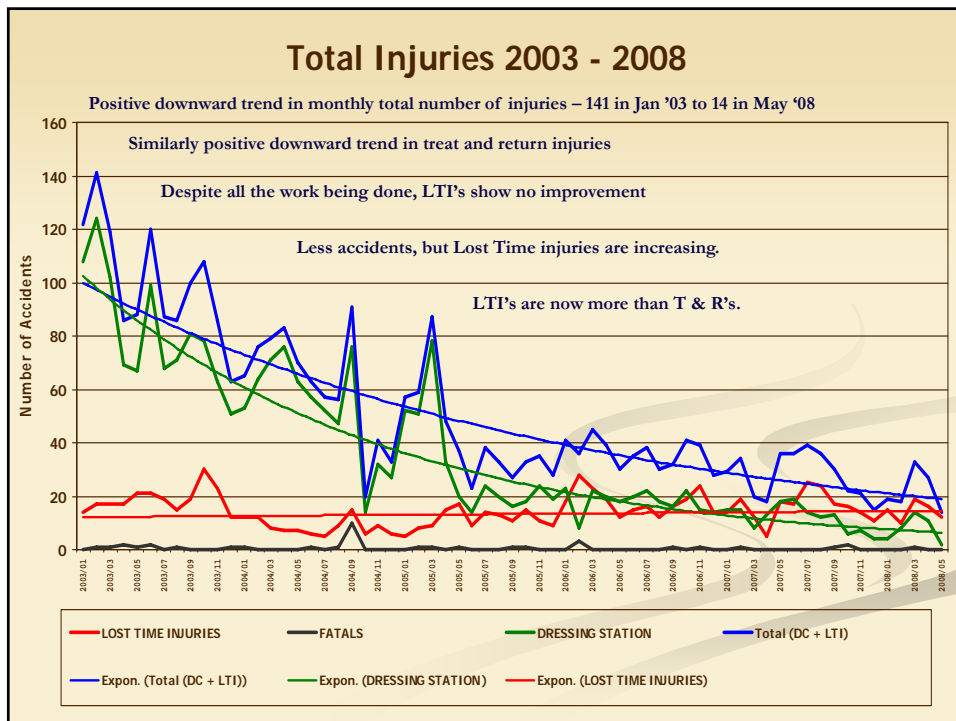
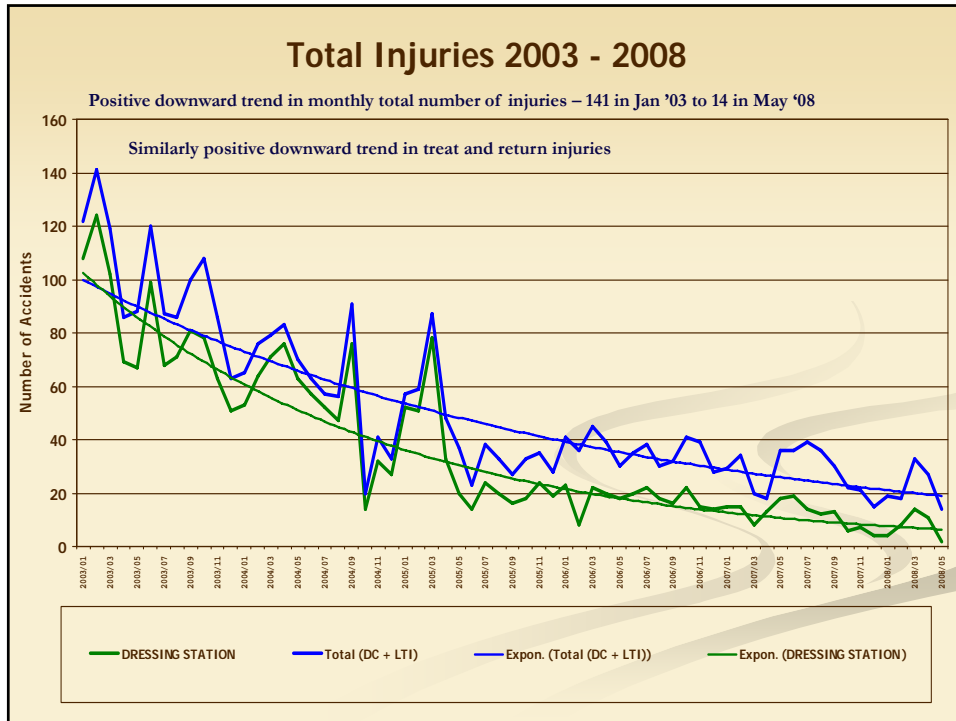


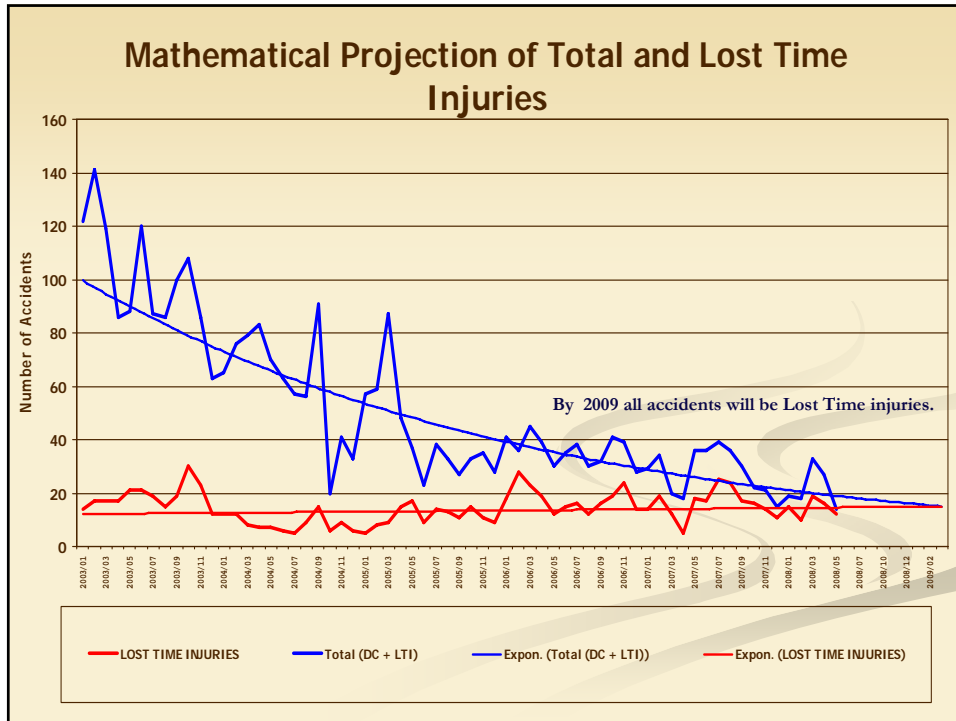
- Northam - Milestone

Total Injuries 2003 - 2008



— Total (DC + LTI) — Expon. (Total (DC + LTI))





Analysis of trends and projection

- The interventions implemented to date do not have the desired effects in terms of meeting the 2013 milestone.

WHY?

- Most of the work has been done on the behavioral aspects of safety. Focusing specifically on the employee.
- People are more aware of the actual execution of tasks, therefore minimizing the “silly accidents”.
- We still believe injury severity can be controlled.

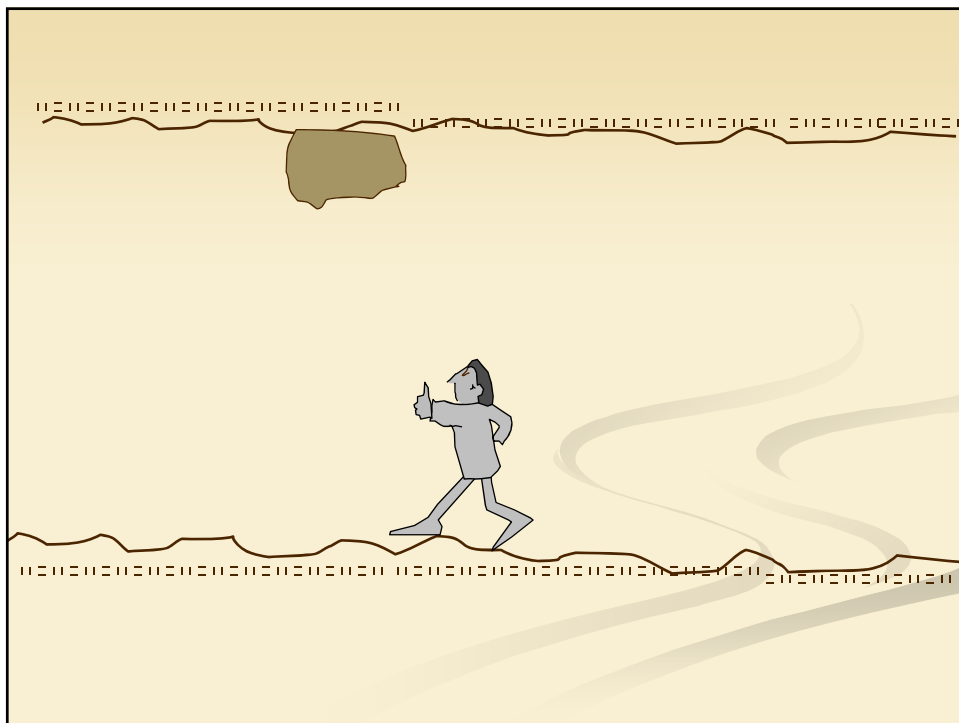
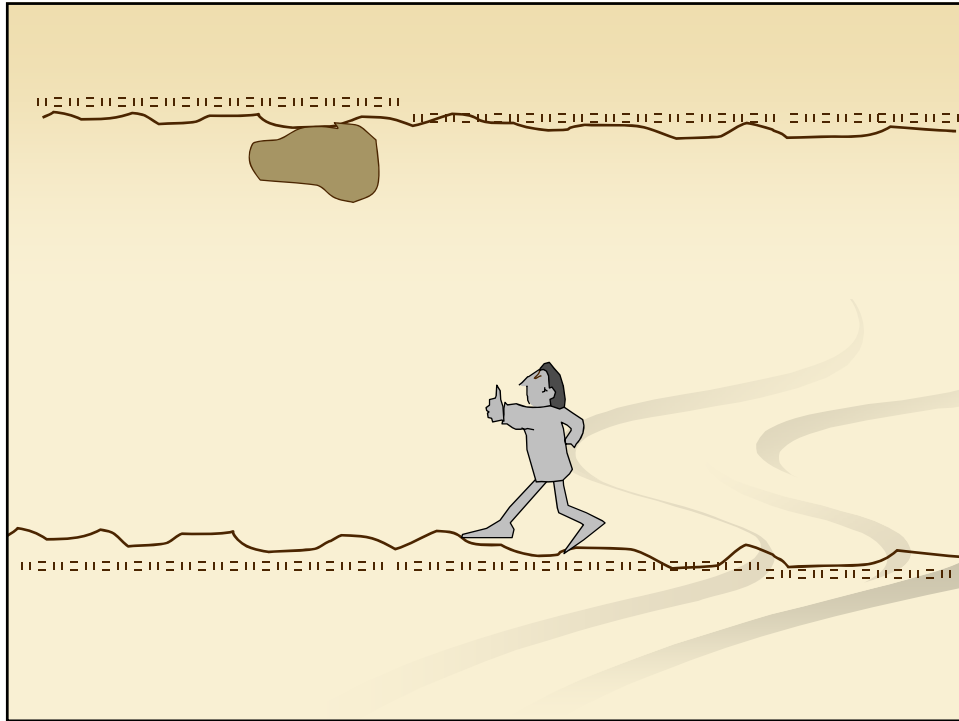
Typical Example of Safety Targets

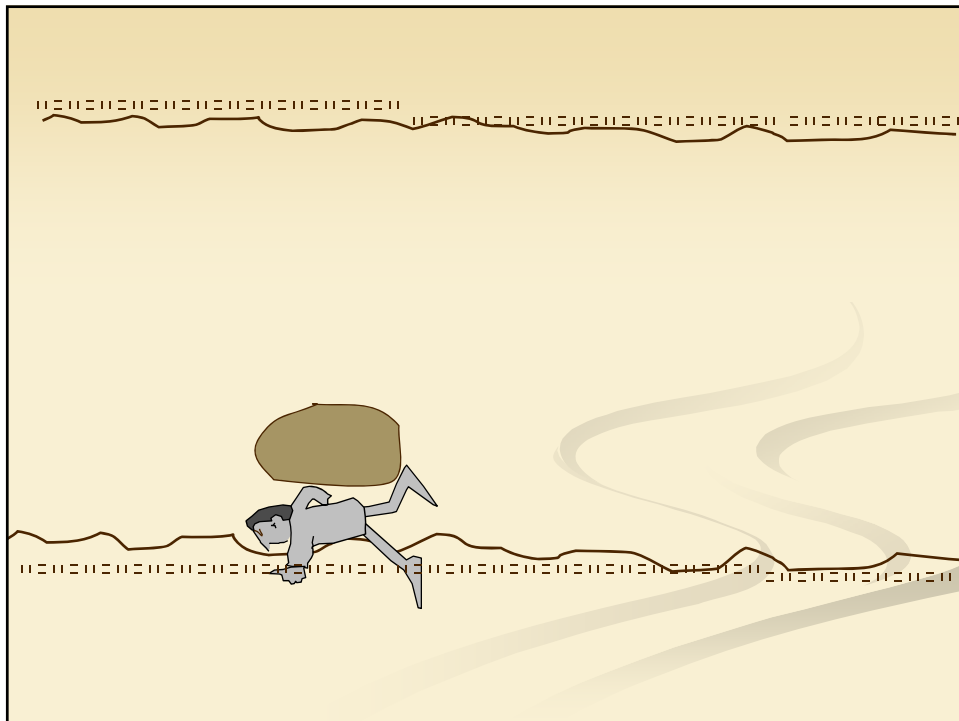
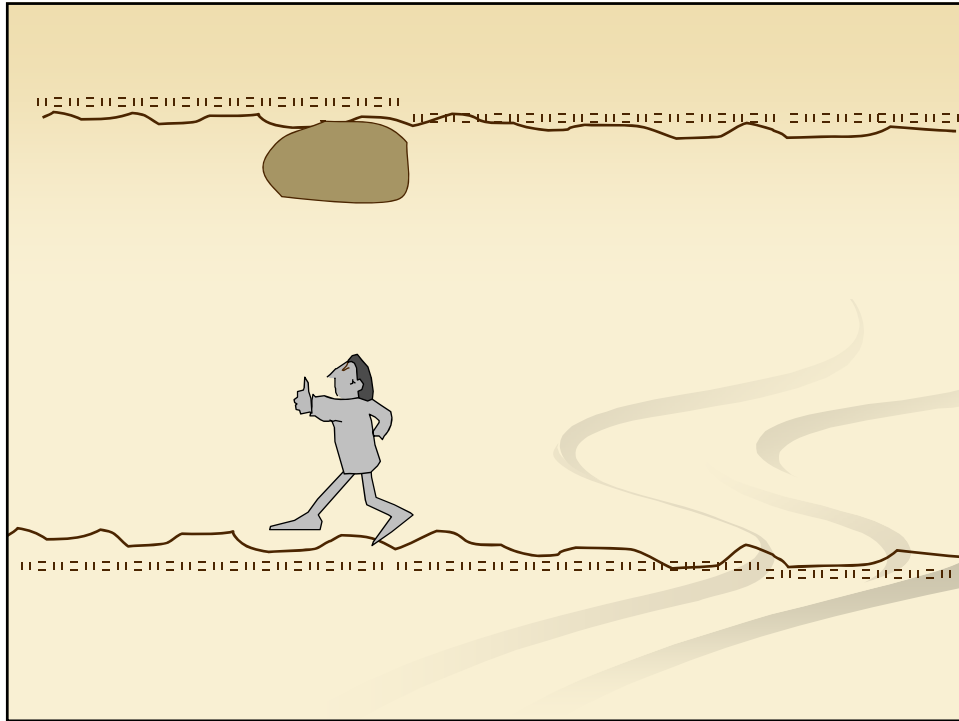
Mine Overseer Section A
Annual Objectives

Dressing Cases	45
Lost Time Injuries	11
Reportable Injuries	6
Fatal Injuries	0

Can injury
severity really
be managed ?

Consider the
following:





Can you really plan
the man's timing
such that the object
strikes him on the
foot and not
catastrophically
flattens him onto
the ground?

The way forward

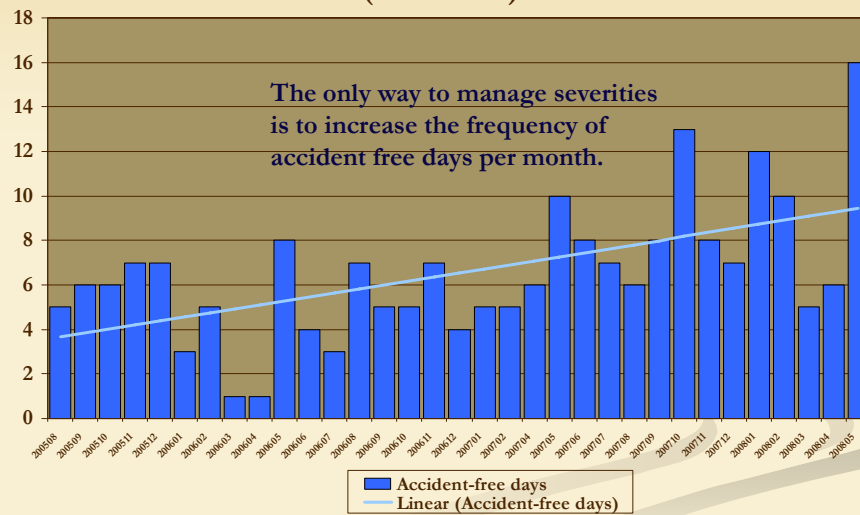
Zero Accidents = Zero Injuries

Northam's new approach Phase 1

Eliminate accidents totally by:

- Accident-free shift campaigns
- Adopt the culture of: if you can have one day accident free, why not the next day as well
- React to, and treat all accidents in the same manner; i.e. proper investigation, cause analysis and remedial actions required. No matter the level of severity

Actual monthly summary of Accident-free days
(2005 - 2008)



Northam's new approach Phase 2

- A new behavioral model is in the design phase, which will focus on the total culture of behavior with emphasis on all levels of supervision.

Questions?