

THE BUSHVELD SAFETY FORUM

6. Safety Graphs All Exco Members to discuss graphs

“Larger” Operations

- 6.1 Fatality Rate
- 6.2 LTIFR
- 6.3 Days Lost Rate (per million man hours)
- 6.4 Number of Fatalities per Calendar Year
- 6.5 All Injury Rate - New Graph

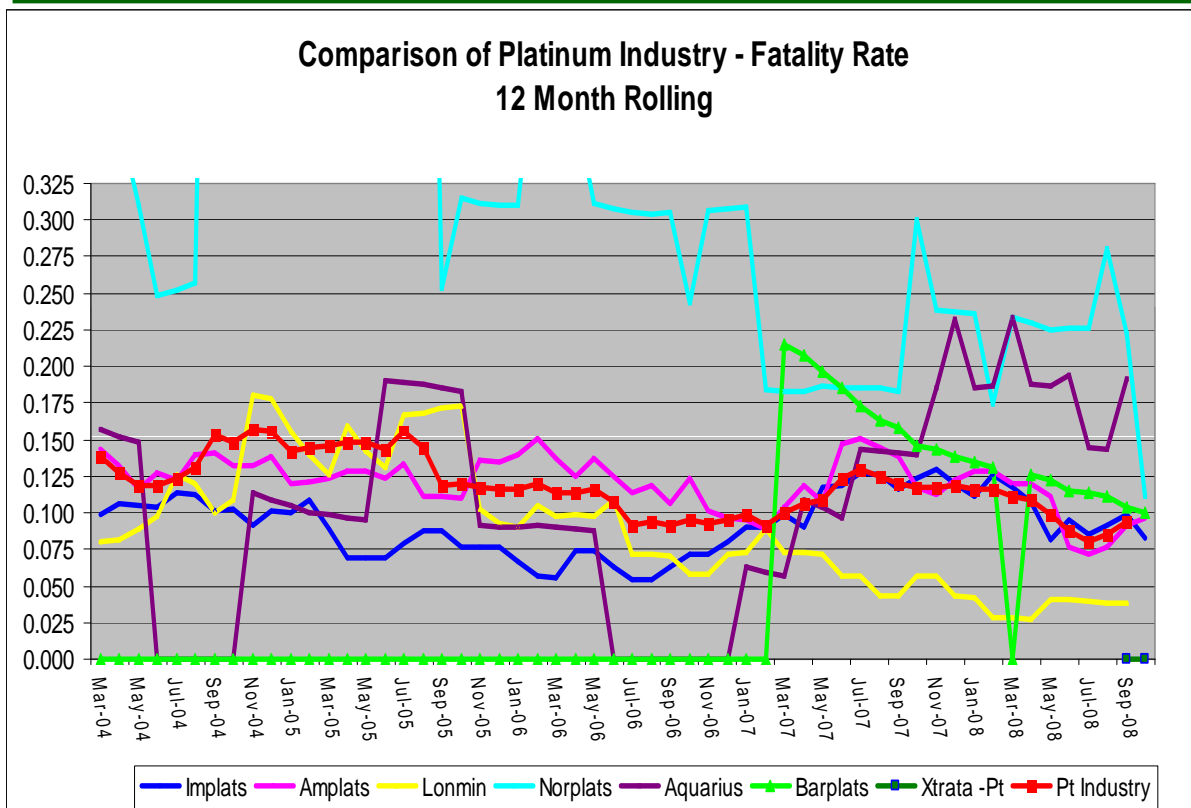
“Smaller” Operations

- 6.6 Fatality Rate
- 6.7 LTIFR
- *** All Injury Rate - New Graph

All Combined

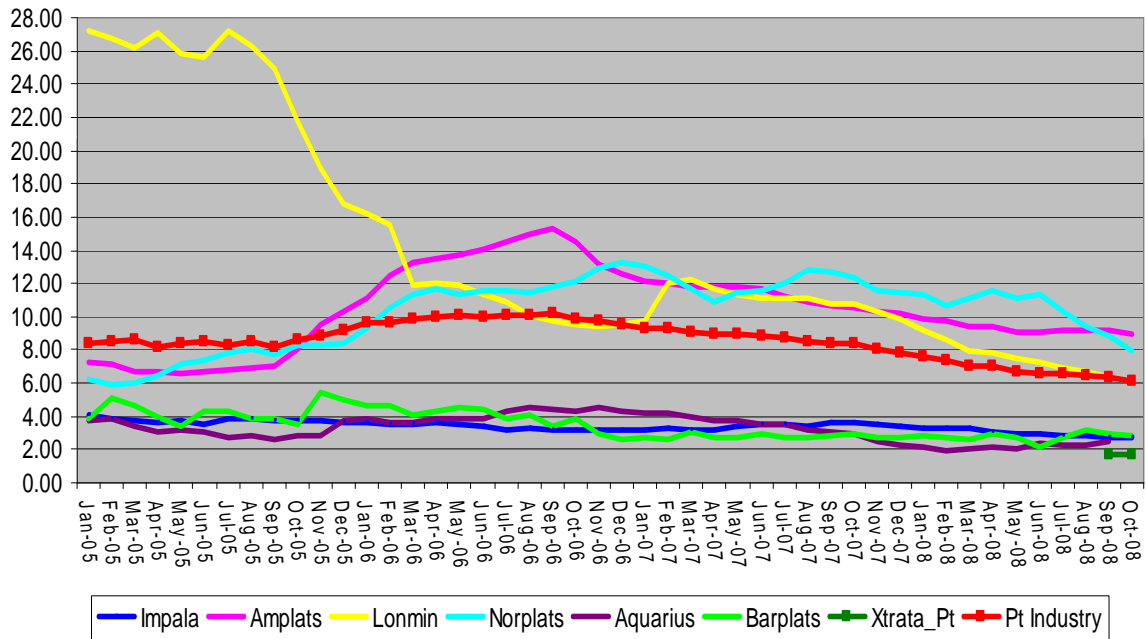
- 6.8 MHSC 2013 Milestone – Pt Mines
- 6.9 Request: - TM3 Operations separated – no info
- 6.10 Request: - Total days lost graph for “smaller” mines – no info

THE BUSHVELD SAFETY FORUM



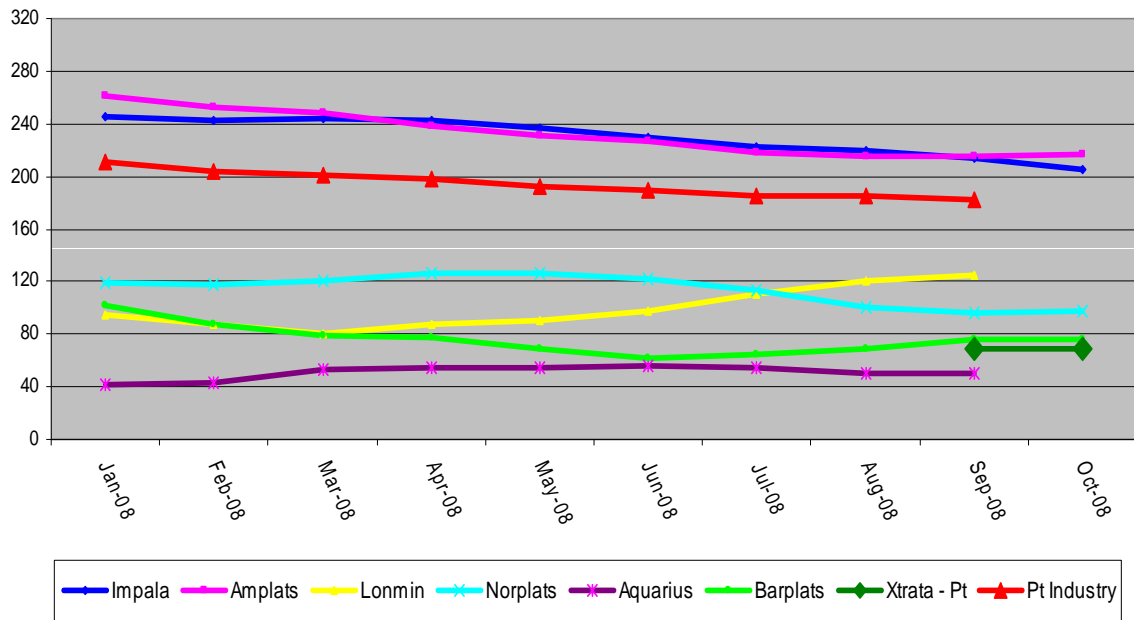
THE BUSHVELD SAFETY FORUM

**Comparison of Platinum Industry - L.T.I.F.R.
(12 Month Rolling)**



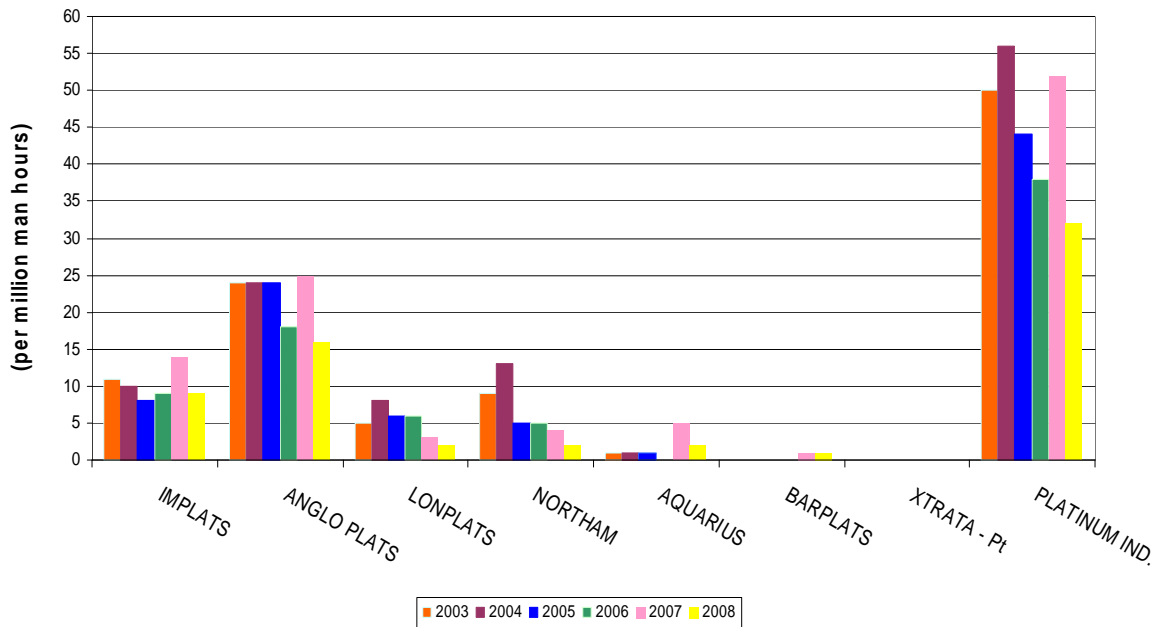
THE BUSHVELD SAFETY FORUM

**Comparison of Platinum Industry
Days Lost Rate (per Million Man Hours)**



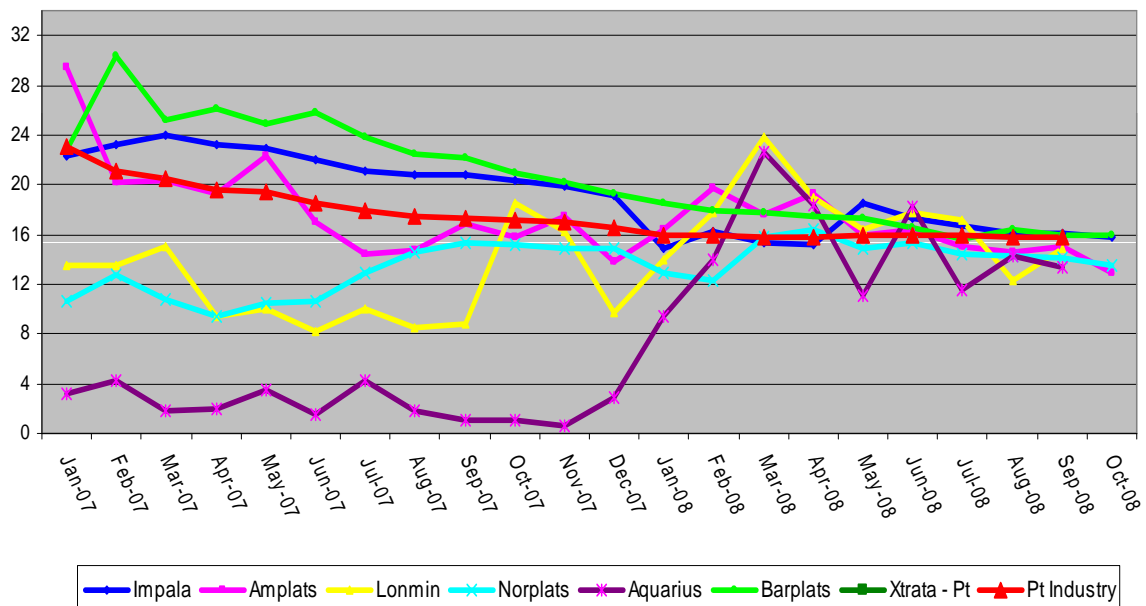
THE BUSHVELD SAFETY FORUM

PLATINUM INDUSTRY
No. of Fatalities per Calendar Year



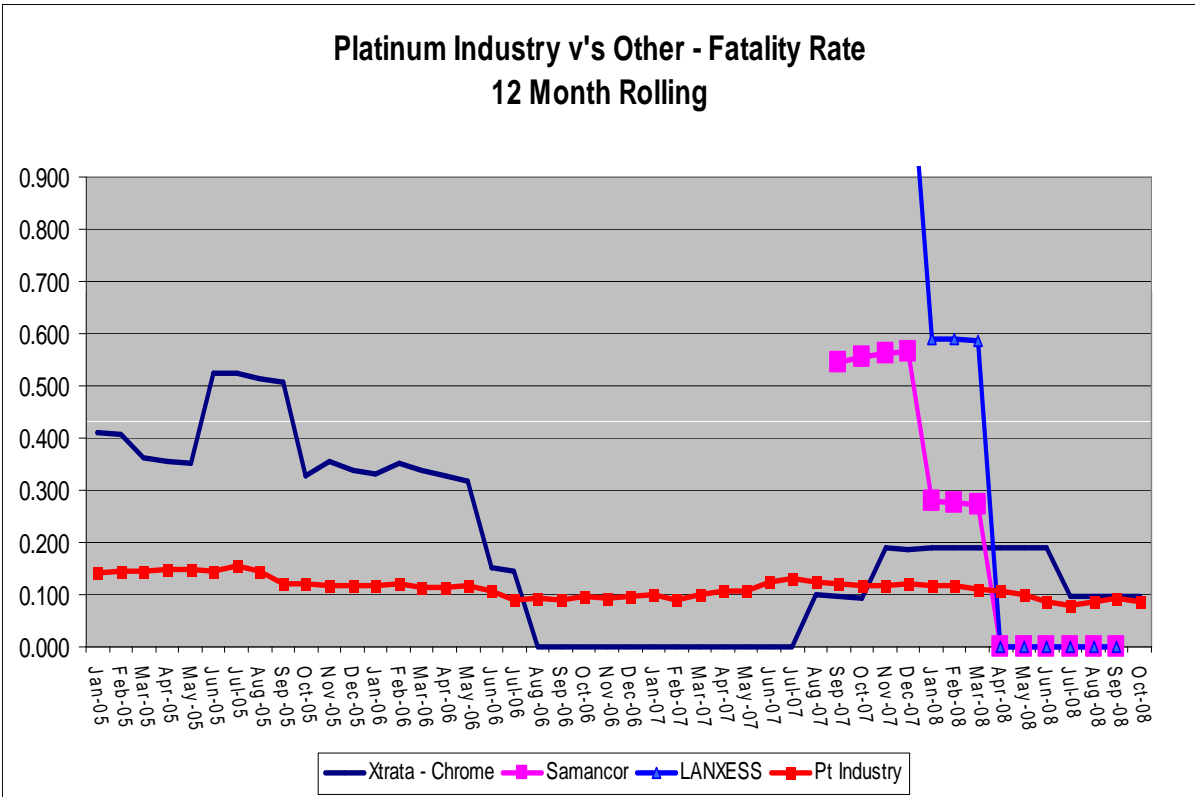
THE BUSHVELD SAFETY FORUM

Comparison of Platinum Industry
All Injury Rate (per Million Man Hours)



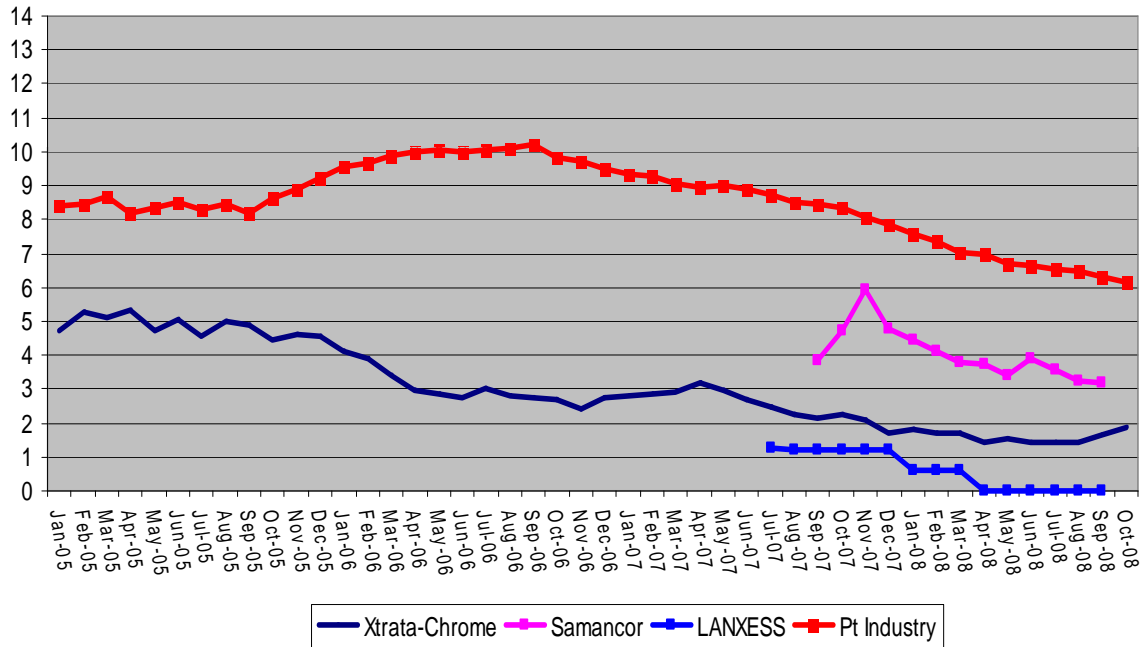
Smaller Mines

THE BUSHVELD SAFETY FORUM



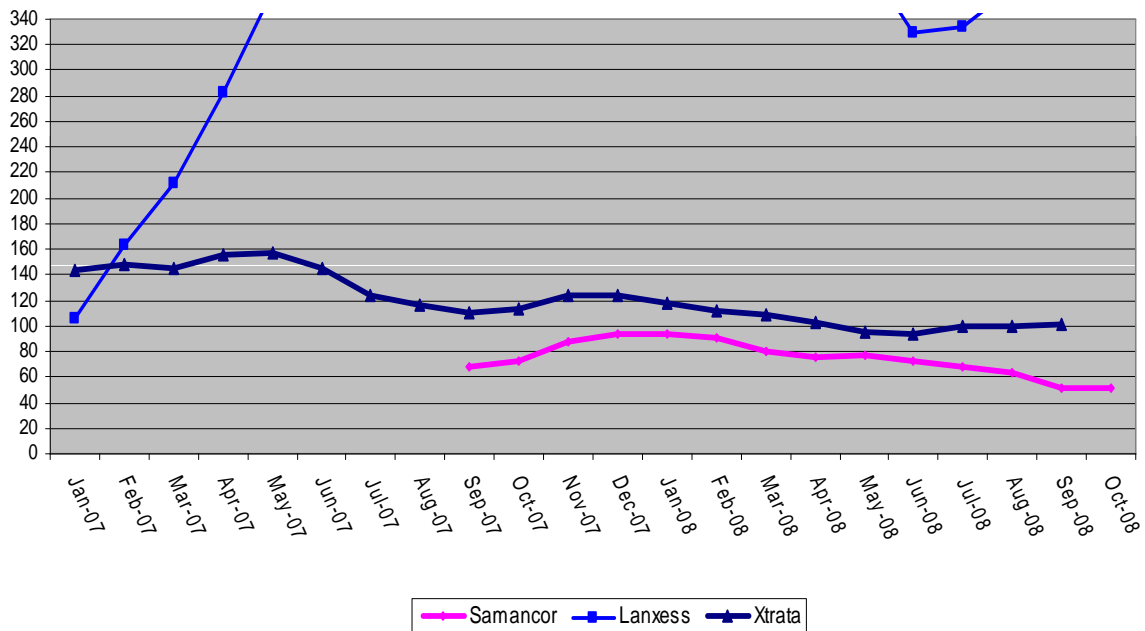
THE BUSHVELD SAFETY FORUM

**Platinum Industry v's Other - L.T.I.F.R.
(12 Month Rolling)**



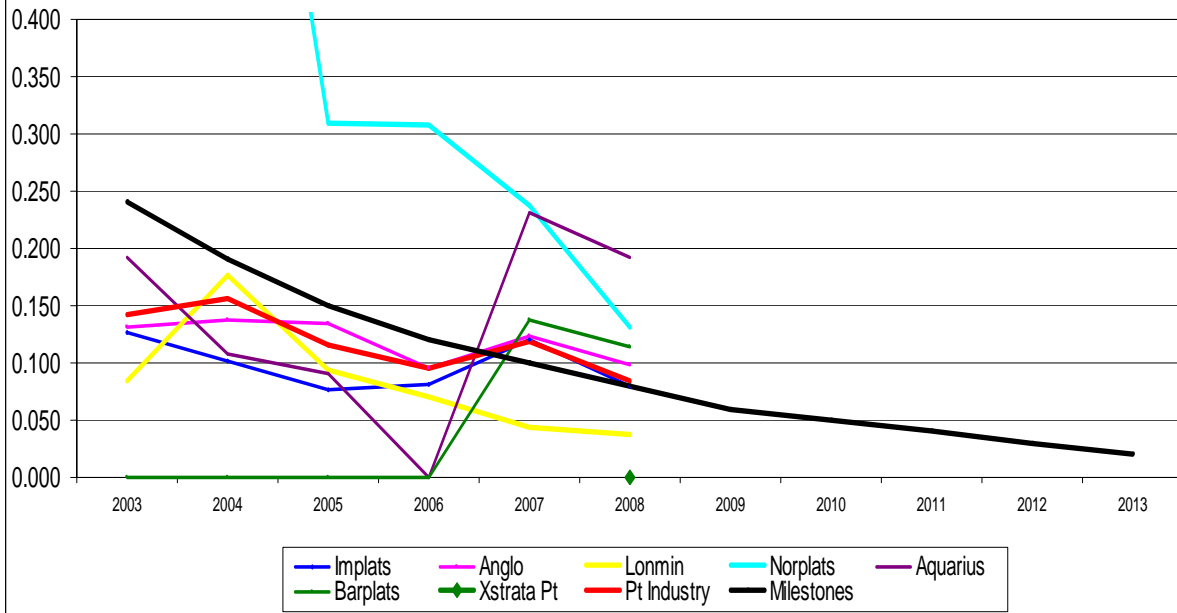
THE BUSHVELD SAFETY FORUM

**All Injury Rate
(Smaller Mines)**



THE BUSHVELD SAFETY FORUM

Platinum Industry Fatality Rate Towards theMHSC's 2013 Milestones



THE BUSHVELD SAFETY FORUM

Fatality Rate Towards theMHSC's (Chrome) 2013 Milestones

